



SAMUEL WOOD



SAMUEL WOOD

School House, Middleton, Chirbury, Shropshire, SY15 6BY

Offers In The Region Of £850,000



School House, Middleton

Chirbury, Shropshire, SY15 6BY



- Picturesque Rural Location
- Sympathetically Extended and Improved
- Oak Framed Double Garage
- Ample Off Road Parking, Double Car Port and Store
- Beautifully Presented Period Property
- Approximately 1.28 Acres
- 4 Bedrooms, 3 Reception Rooms
- EPC Rating E

Welcome to School House, a charming and characterful property located in the picturesque village of Middleton near Chirbury. This unique and spacious family home offers a perfect blend of historical charm and modern convenience with approximately 1.28 acres of gardens, paddock, and orchard.

Middleton is a picturesque village located just over 5 miles from Montgomery, offering a peaceful and idyllic lifestyle. The nearby village of Chirbury benefits from a local village shop and public house, making it an ideal location for families. Montgomery itself is a charming market town with a range of amenities, shops, schools, restaurants and essential services.

Upon entering School House, you are greeted by a sense of character and warmth. The property boasts three spacious reception rooms, all with original features such as exposed beams, wooden flooring, and cozy fireplaces. The large kitchen / dining area is perfect for family gatherings and features modern appliances alongside traditional charm.

The first floor hosts four generously sized bedrooms, all filled with natural light. The master suite benefits from an en-suite shower room, a well-appointed bathroom provides convenience and comfort for the entire family. The bedrooms enjoy countryside views and have period features with bedroom two having a delightful Juliet balcony.

Outside, the property is surrounded by beautifully landscaped gardens extending to approximately 1.28 acres, offering a tranquil oasis to relax and enjoy the stunning countryside views. There is ample parking space with a private driveway and access to the paddock and orchard beyond. The garden is thoughtfully landscaped, offering a blend of lawns, flowerbeds, and a patio area, perfect for al fresco dining or enjoying the beautiful surroundings bordered by mature trees and hedges. A two bay oak framed garage provides secure storage for vehicles, a further oak framed double carport offers convenience and storage.







Directions

We recommend using what3words, navigate to: -
//showcases.schooling.umbrellas

Services: We understand that the property has oil-fired central heating, mains electricity, mains water and private drainage. Fitted solar panels are owned by the property and heat the domestic water system.

Broadband Speed: Basic 3 Mbps, Wireless Broadband Available at 40 Mbps

Flood Risk: Very Low

Tenure: We understand the tenure is Freehold.

Local Authority:
Shropshire Council,
The Shirehall,
Abbey Foregate,
Shrewsbury,
Shropshire
SY2 6ND.
Tel. 0345 678 9000

Council Tax Band: D

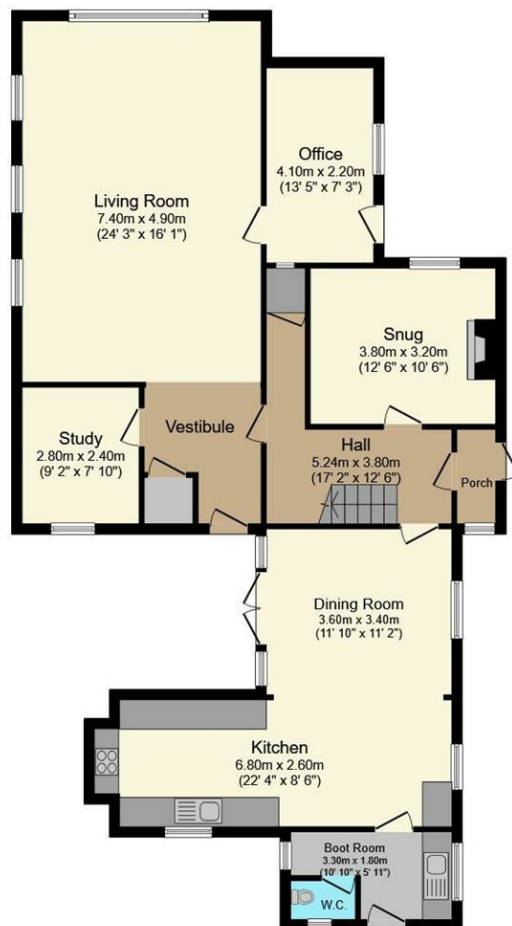
Mortgage Services: We offer a no obligation mortgage service through Hilltop Mortgage Solutions, please ask a member of our team for further details.

Referral Services: Samuel Wood routinely refers vendors and purchasers to providers of conveyancing and financial services. We may receive fees from them as declared in our Referral Fees Disclosure Form.

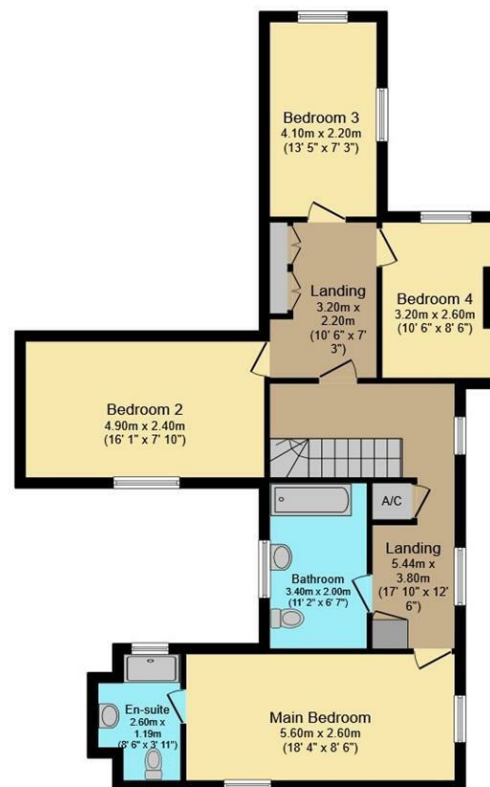
To appreciate the unique charm and character of School House we highly recommend arranging a viewing.







Ground Floor



First Floor

We take every care in preparing our sales details. They are checked and usually verified by the Vendor. We do not guarantee appliances, alarms, electrical fittings, plumbing, showers etc. You must satisfy yourself that they operate correctly. Room sizes are approximate; they are usually taken in metric and converted to imperial. Do not use them to buy carpets or furniture. We cannot verify the tenure, as we do not have access to the legal title; we cannot guarantee boundaries or rights of way so you must take the advice of your legal representative. No person in the employment of or representing Samuel Wood has any authority to make any representation or warranty whatever in relation to this property. If there is any point which is of particular importance to you, please contact the office and we will be pleased to check the information. Do so particularly if contemplating travelling some distance to view. Applicants are advised that the majority of our shots are taken with a wide angle lens.

CONTEMPORARY AGENCY • TRADITIONAL VALUES
 10 Corvedale Road, Craven Arms, Shropshire, SY7 9ND
 Tel: 01588 672728 | cravenarms@samuelwood.co.uk